

# **The HISTORICAL BANLAT AREA**

## **Comparative data of the 11 composite barangays**

**Consultation – Workshop on the  
AREA DEVELOPMENT PLAN  
19-20 March 2012, Baras, Rizal**

# HBA's 11 barangays

SAUYO

TALIPAPA

TANDANG SORA

PASONG TAMO

CULIAT

NEW ERA

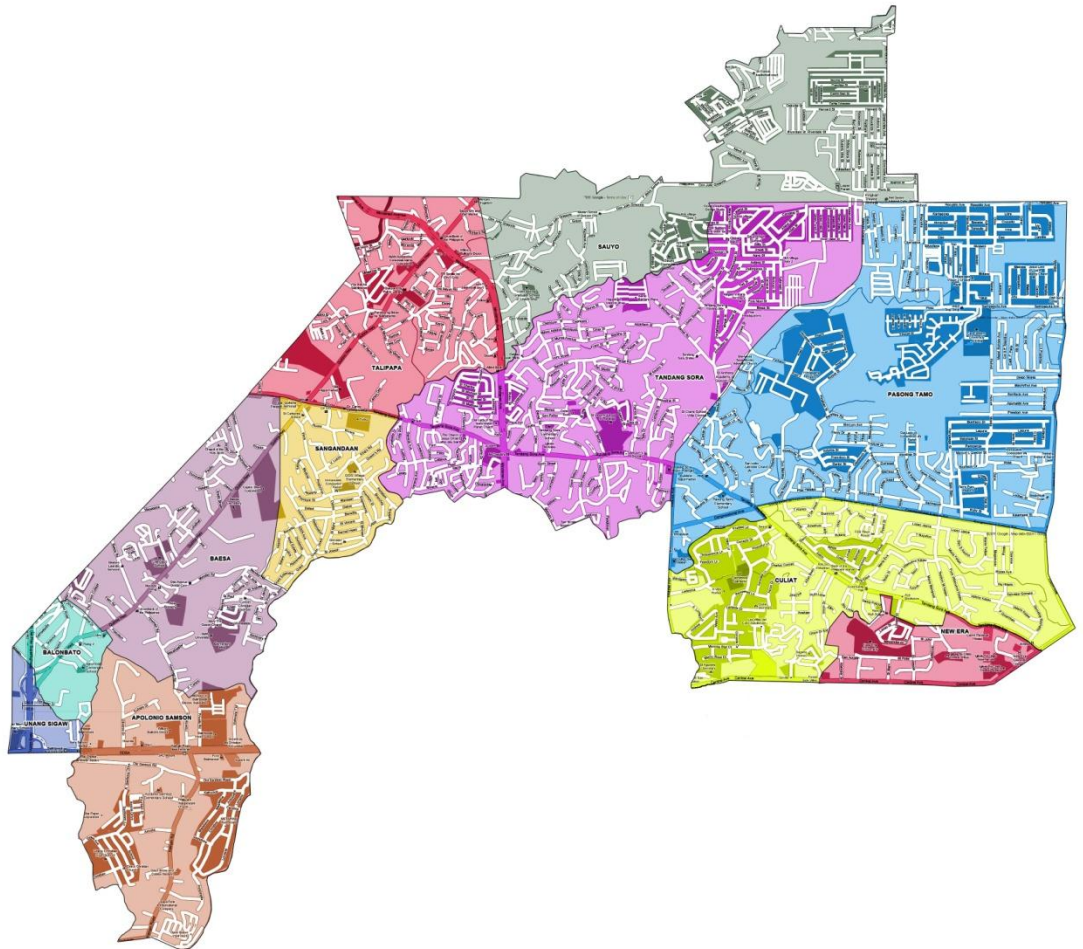
SANGANDAAN

BAESA

BALOMBATO

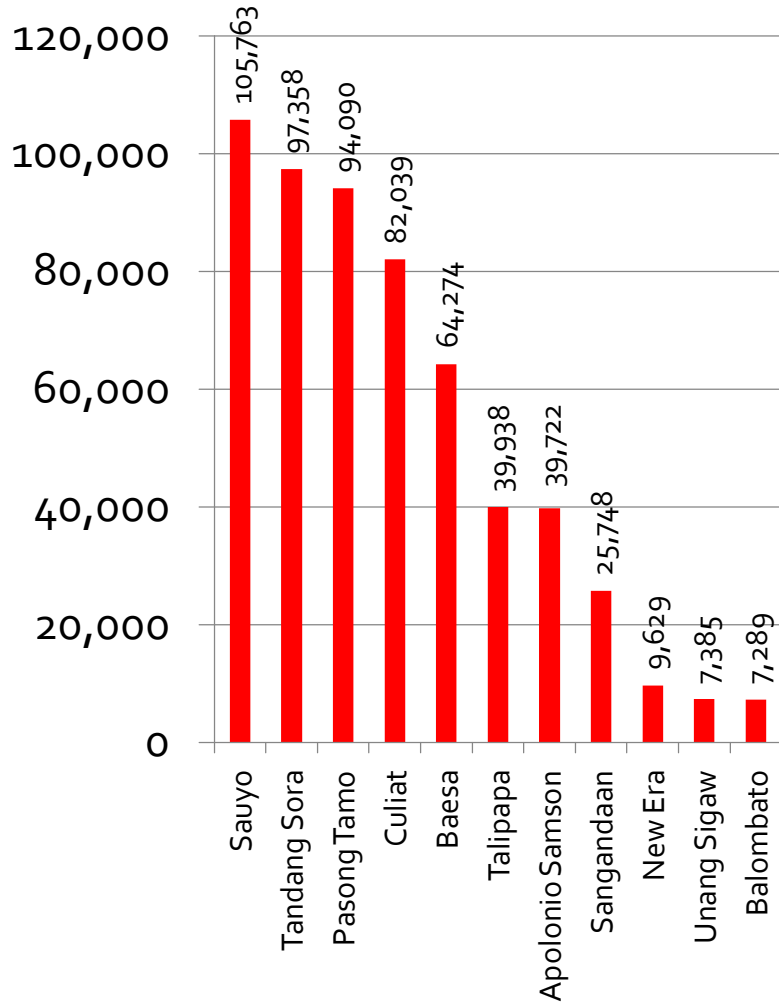
UNANG SIGAW

APOLONIO SAMSON

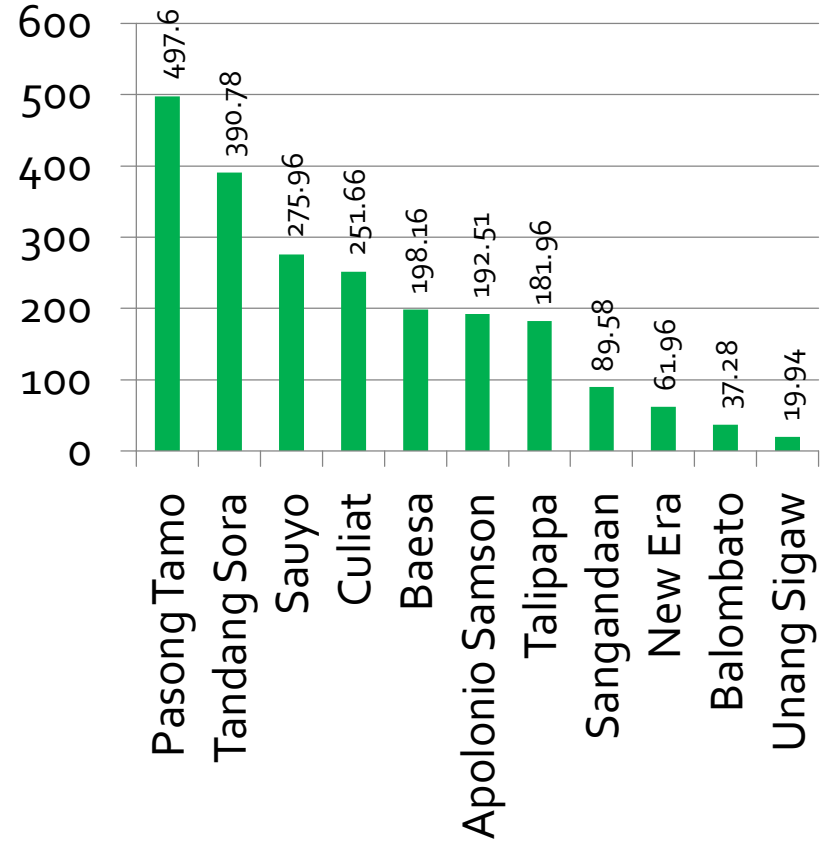


# Basic data

## Population (2011 Est.)



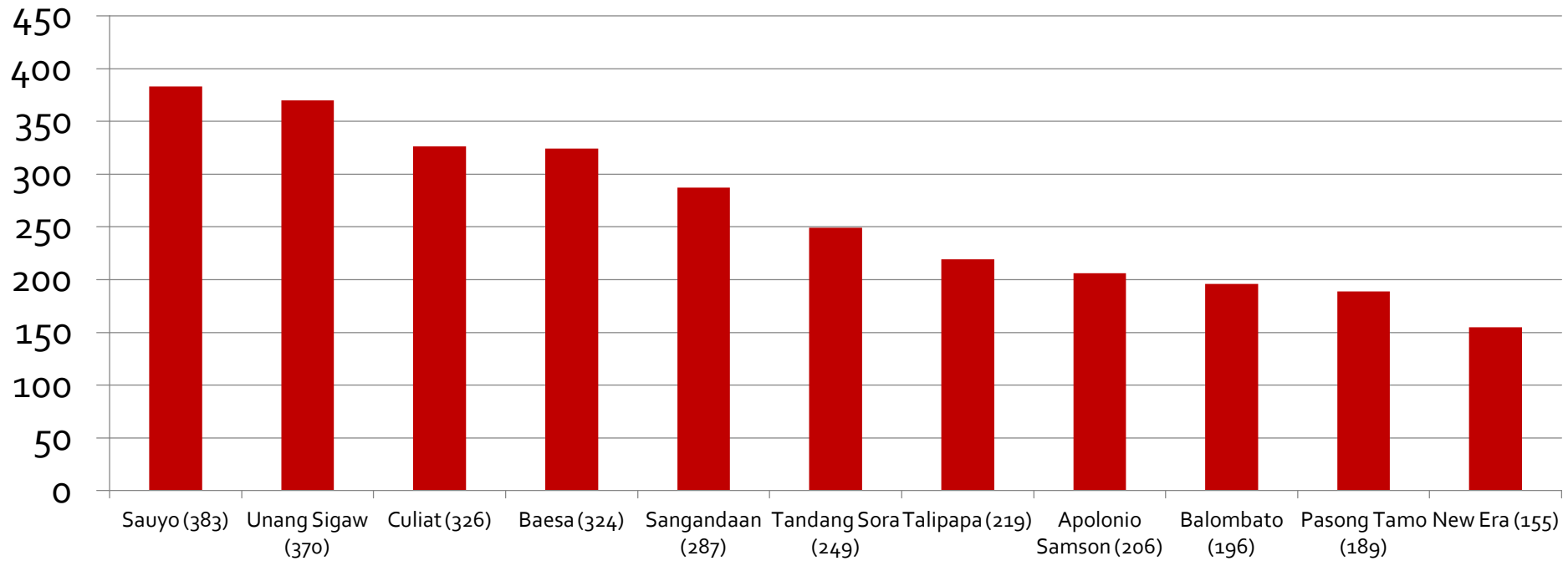
## Land area (ha.)



	2007 Popn	Annual growth	2011 Est. Popn		Land area (has.)
Sauyo	67,587	11.845	105,763	Pasong Tamo	497.60
Tandang Sora	74,863	6.789	97,358	Tandang Sora	390.78
Pasong Tamo	82,340	3.391	94,090	Sauyo	275.96
Culiat	68,618	4.567	82,039	Culiat	251.66
Baesa	55,414	3.778	64,274	Baesa	198.16
Talipapa	34,632	3.628	39,938	Apolonio Samson	192.51
Apolonio Samson	35,397	2.924	39,722	Talipapa	181.96
Sangandaan	24,100	1.667	25,748	Sangandaan	89.58
New Era	7,911	5.067	9,629	New Era	61.96
Unang Sigaw	7,059	1.134	7,385	Balombato	37.28
Balombato	7,501	(0.716)	7,289	Unang Sigaw	19.94
18% of QC 5% of NCR	465,422	4.589	573,236	13.6% of QC 4% of NCR	2,197.39

# Basic data

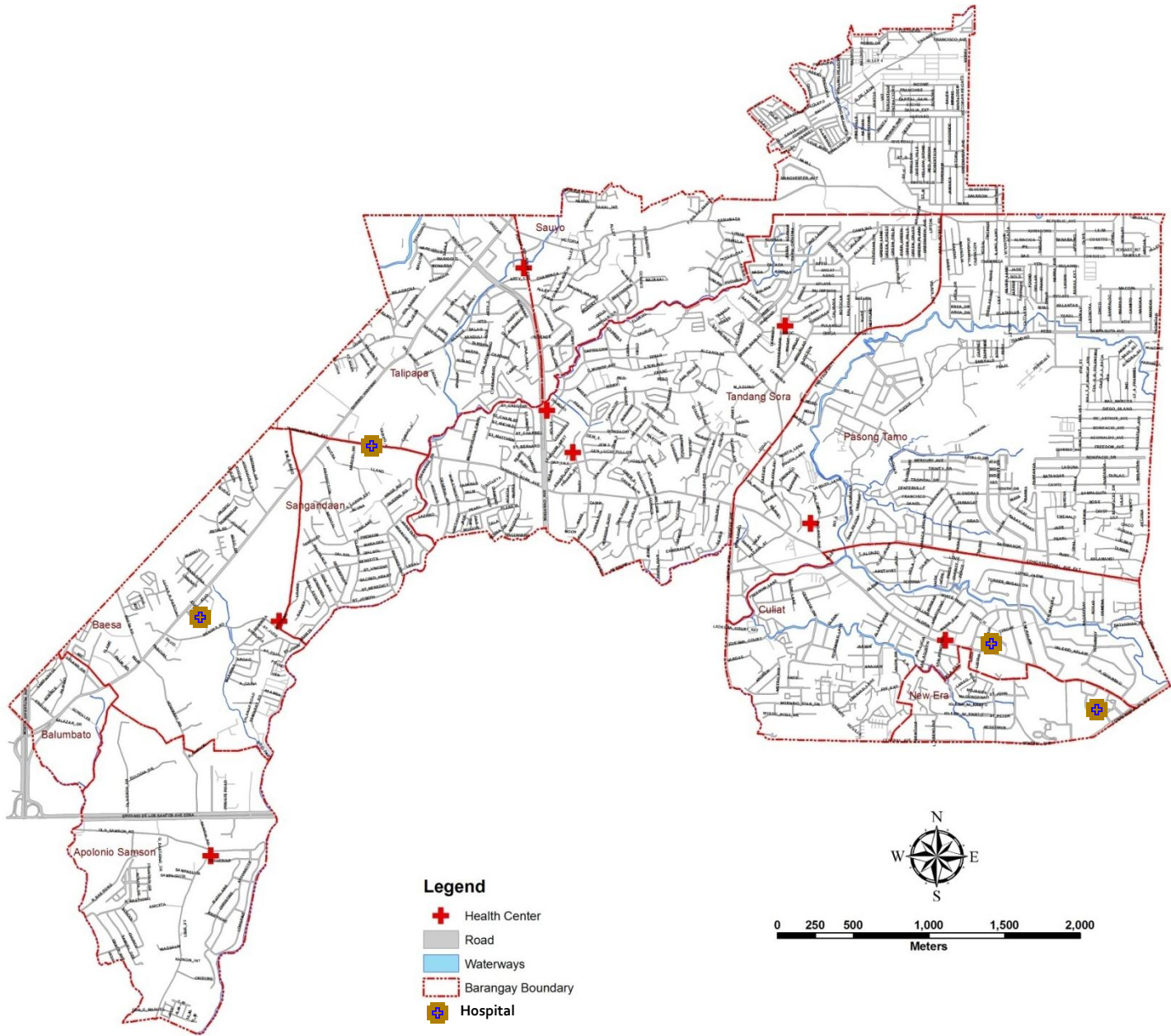
## Population density



# Social development

## HEALTH

	Health center	Private hospital
Baesa	Baesa HC	Pascual General Hospital
Culiat	Wenceslao dela Paz HC	Ramones General Hospital (also known as OCW General Hospital)
Sangandaan	Sangandaan HC	Casaul General Hospital (no longer operational but will reopen as soon as internal disputes are settled, according to barangay officials)
New Era	(constituents needing medical attention go to Culiat)	New Era General Hospital
Apolonio Samson	Apolonio Samson HC	
Pasong Tamo	M H Pedro HC	(a private hospital will be opening soon)
Talipapa	Tandang Sora HC	(a private hospital is under construction)
Sauyo	Sauyo HC	(the barangay is near the soon to be opened hospital in Pasong Tamo)
Tandang Sora	Banlat HC	(the barangay is near the soon to be opened hospital in Pasong Tamo)
Balombato	(covered by Baesa HC)	
Unang Sigaw	(covered by Baesa HC)	



Sauyo

Talipapa

Tandang Sora

Pasong Tamo

Sangaydaan

Baesa

Culliat

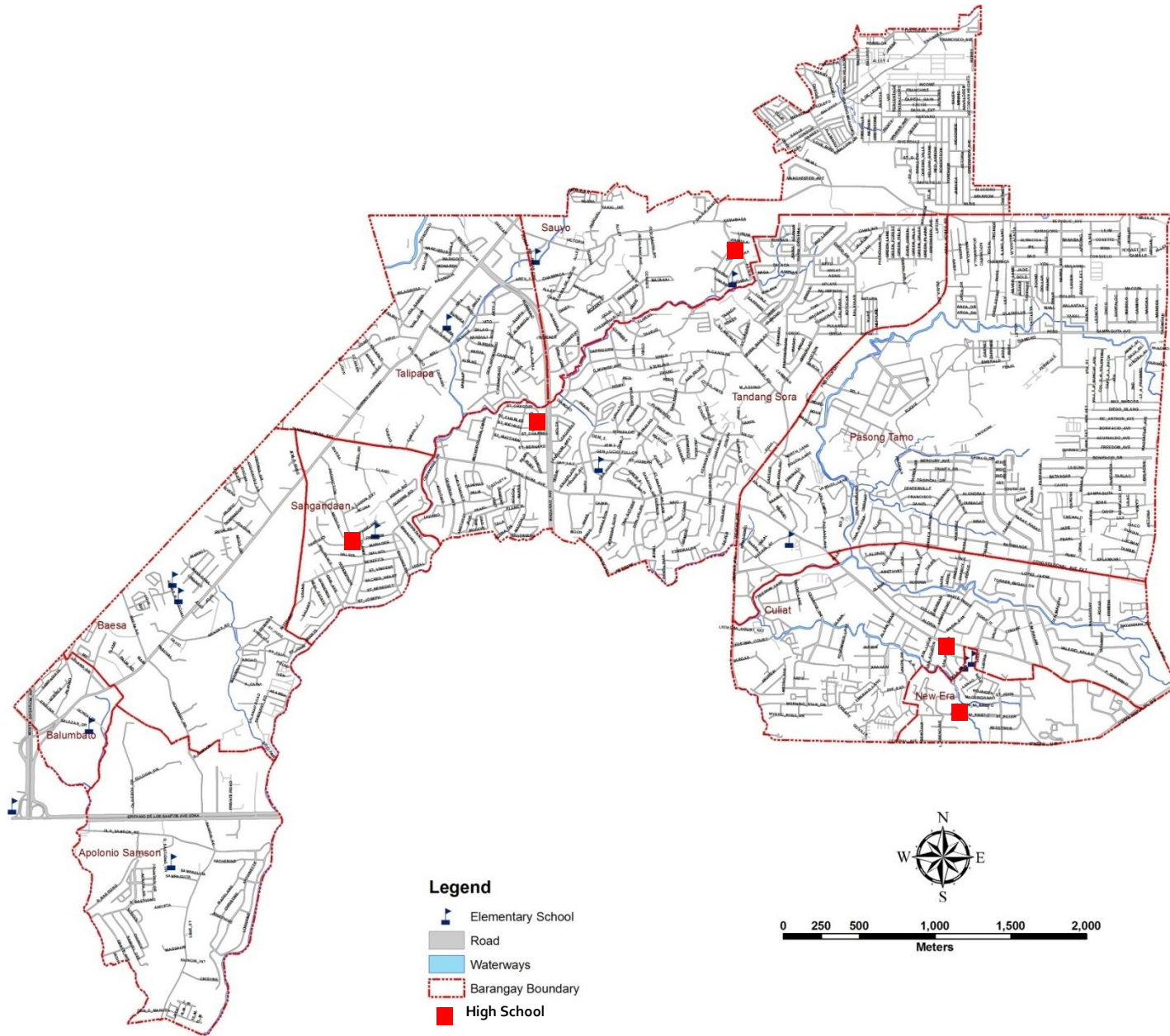
New Era

Balumbato

Apolonio Samson

# Social development EDUCATION

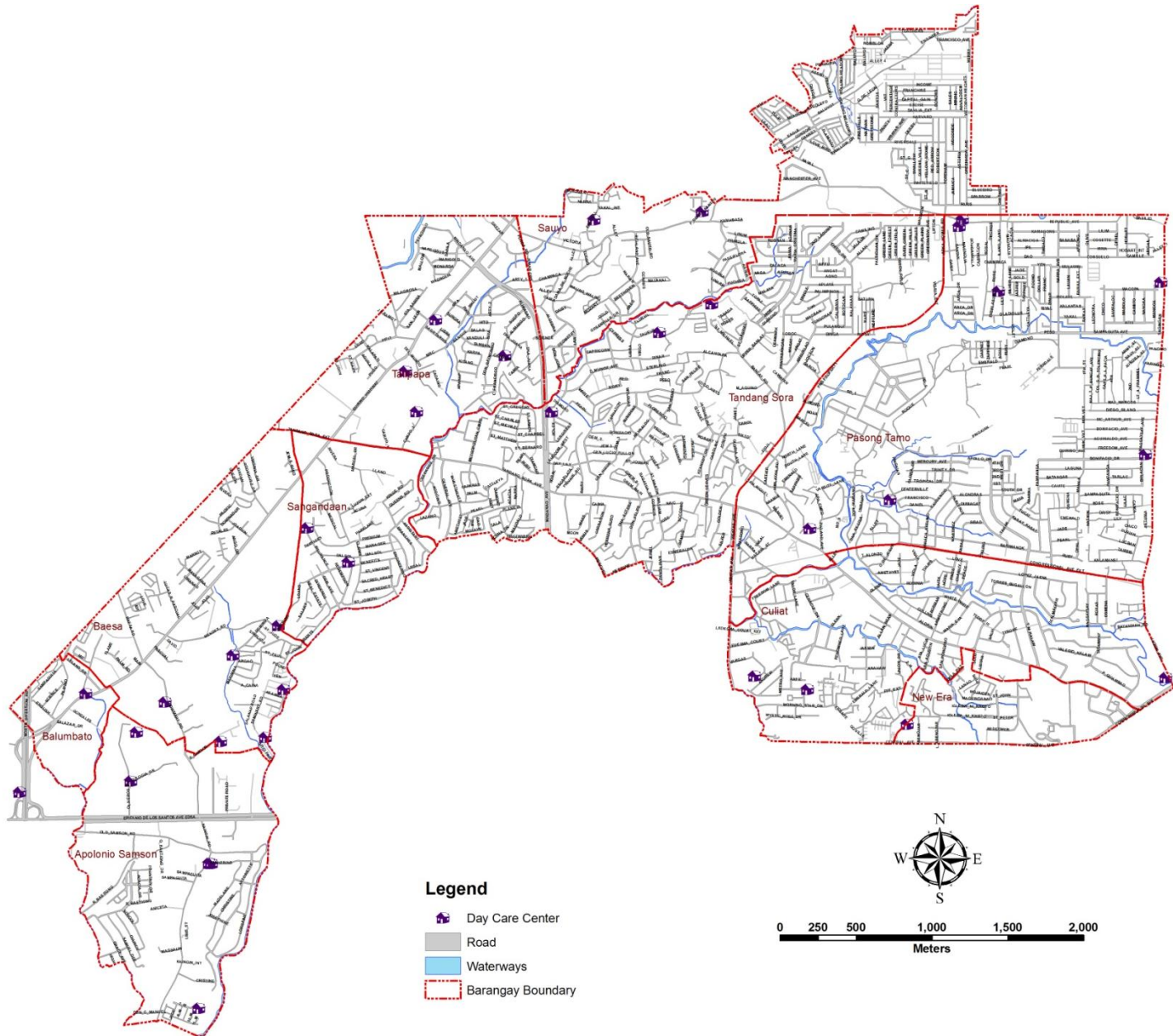
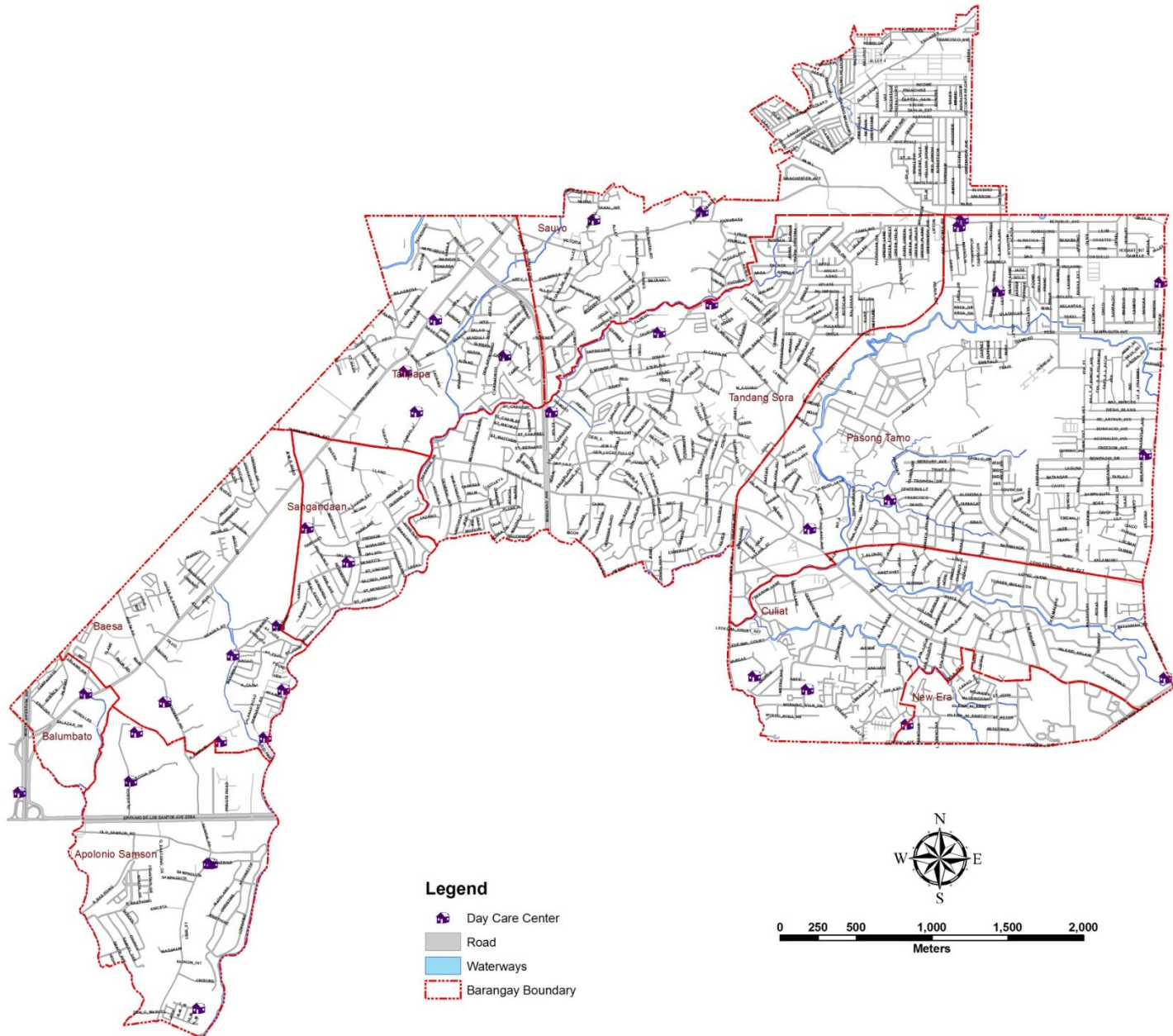
Public elementary schools		2010 Excess(deficit) classrms @1:50	Public secondary schools		2010 Excess(deficit) classrms @1:50
Apolonio Samson	Apolonio Samson	9	Sangandaan	Ismael Mathay	3
Unang Sigaw	Andres Bonifacio	7	Culiat	Culiat	2
Talipapa	Placido del Mundo	7	New Era	New Era	(4)
Baesa	Lucas R. Pascual Leopoldo B. Santos	5	Sauyo	Sauyo	(13)
Balombato	Balombato	4	Tandang Sora	Tandang Sora	(13)
Sangandaan	GSIS	2	Apolonio Samson		
Tandang Sora	Tandang Sora	(1)	Baesa		
New Era	New Era	(2)	Balombato		
Culiat	Culiat	(3)	Pasong Tamo		
Pasong Tamo	Pasong Tamo	(6)	Talipapa		
Sauyo	Sauyo	(15)	Unang Sigaw		



# Social development

## WELFARE

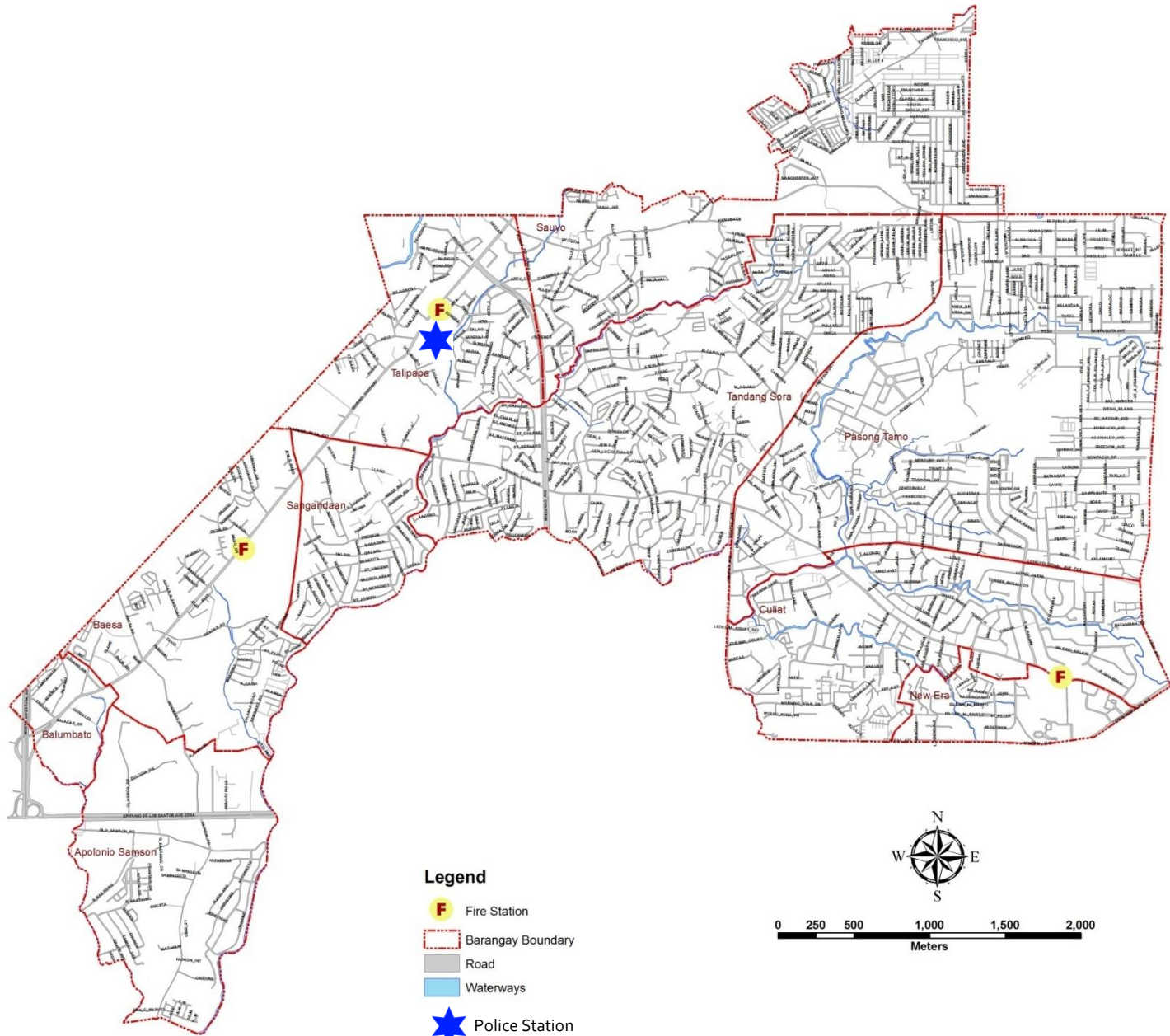
	Day care centers
Pasong Tamo	8 locations (Area I, Rosal St., Pingkian Zone 3, Philand (Centerville), Inocentes Farm, Pingkian Zone 2, Veterans Area 3, Veterans Area 2)
Baesa	6 locations (Anthony Alonzo, Sitio Pajo, Alley 2 Howmart, F Carlos, Mendez Road, Dominga Ext.)
Apolonio Samson	4 locations (Kaingin, near barangay basketball court, Kaunlaran, Oliveros)
Sauyo	4 locations (Old Cabuyao, Area 135-99, Area 5, Area 6)
Talipapa	5 locations (Campo 2, Bgy Hall, Sitio Sto Nino, Candido St., Rubberworld)
Culiat	4 locations (Metro Heights, Luzon Ave., Cenacle Compound, Casanova)
Sangandaan	3 locations (Proj. 8, Sitio San Roque, Insurance)
Tandang Sora	2 locations (Upper Banlat, Taurus St.)
Balombato	1 location (Bgy. Hall)
Unang Sigaw	1 location (Bgy. Hall)
New Era	



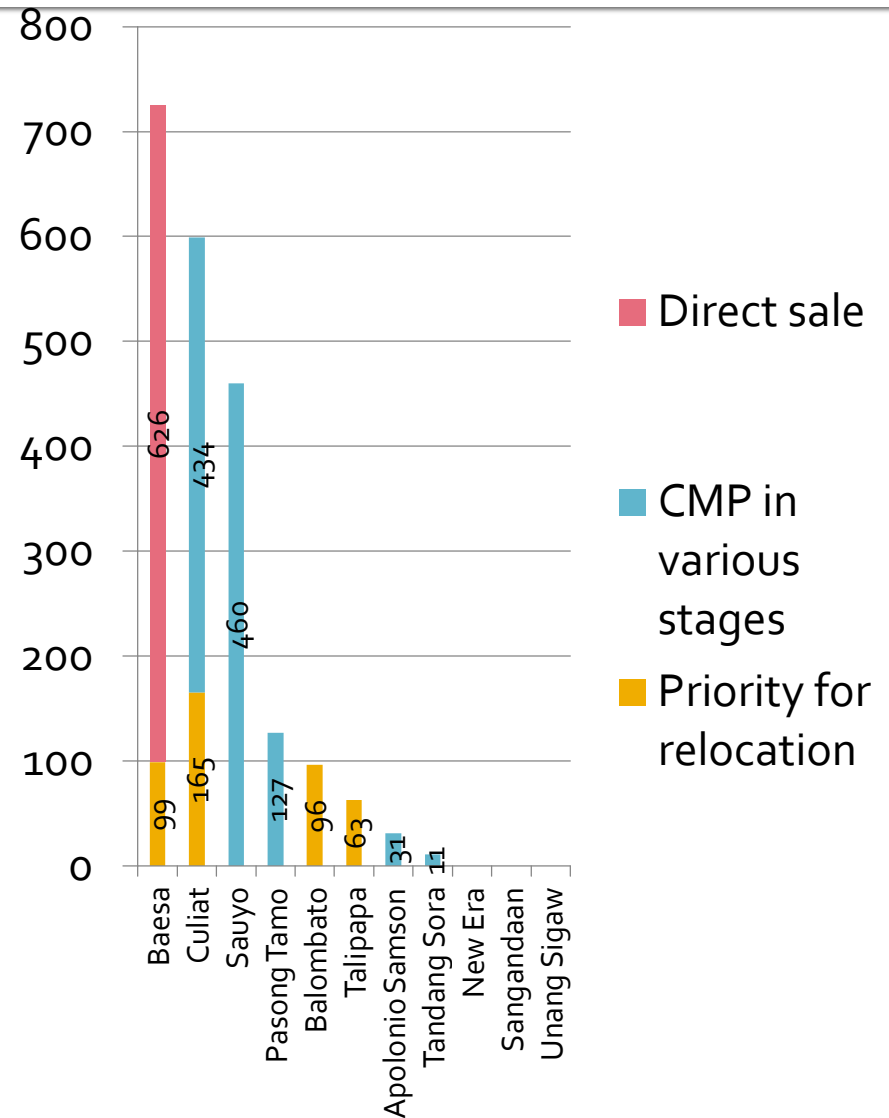
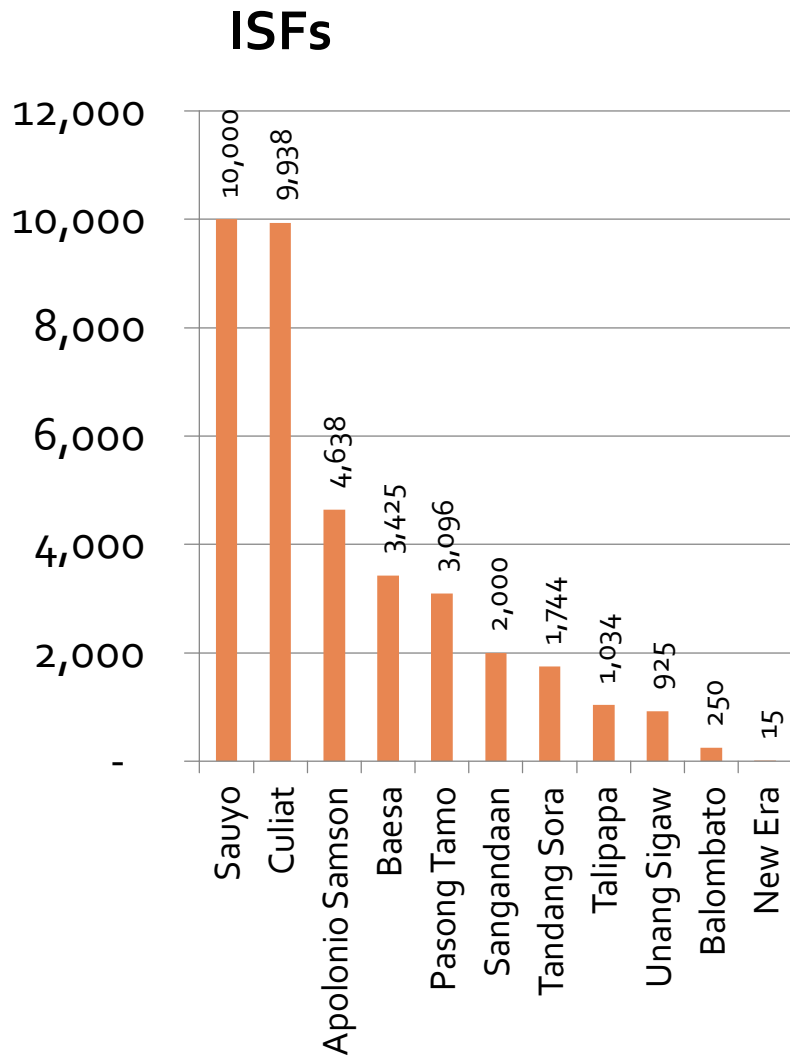
# Social development

## PROTECTIVE SERVICES

	Police station	Fire sub-station
Talipapa	Quirino Highway	Quirino Highway (served by LPGMA volunteers)
Baesa		Quirino Highway
Culiat	Police sub-station (in front of New Era)	Tandang Sora Ave.
Apolonio Samson	La Loma station and Talipapa station	
Balombato		(will have a fire truck by 2012)
New Era	Sub-station of PCP <sub>4</sub>	(with fire brigade)
Pasong Tamo	Sub-station community precinct (annex hall)	2 fire trucks and equipment
Sangandaan	Station 3 and Traffic Sector 6 (no impounding area)	
Sauyo	Station 4	(served by LPGMA volunteers)
Tandang Sora	Station 3	Fire truck (covered by New Era)
Unang Sigaw	(assisted by Bgy. Sangandaan)	



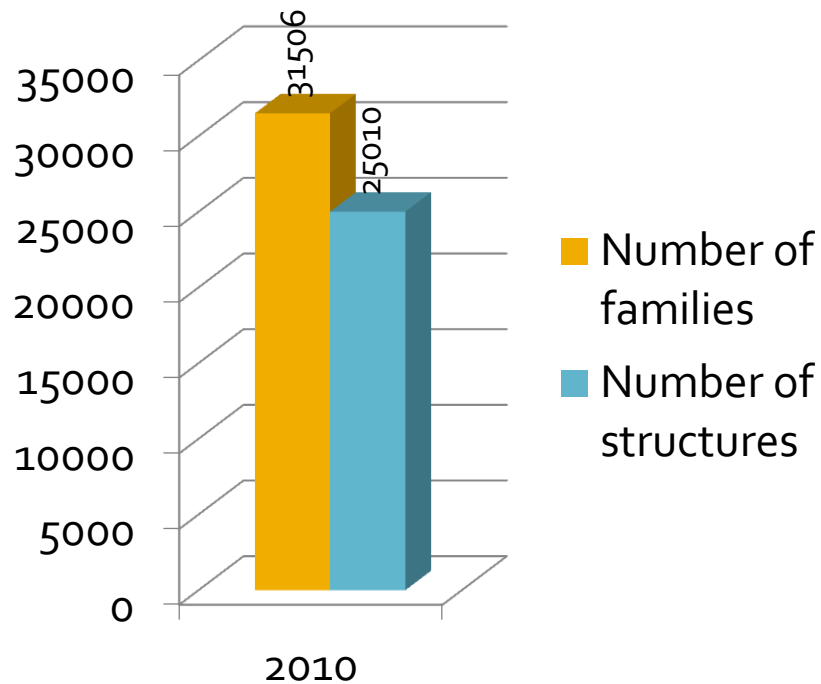
# Social development HOUSING



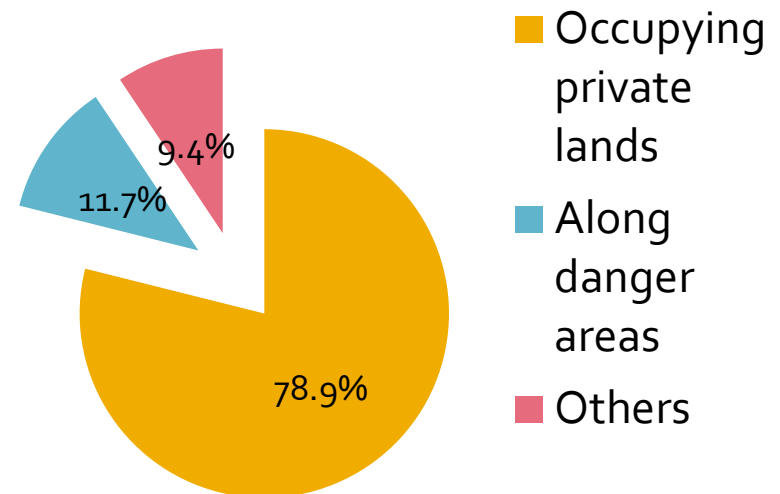
# Social development

## HOUSING

### INDICATING DOUBLED-UP OR HOMELESS FAMILIES

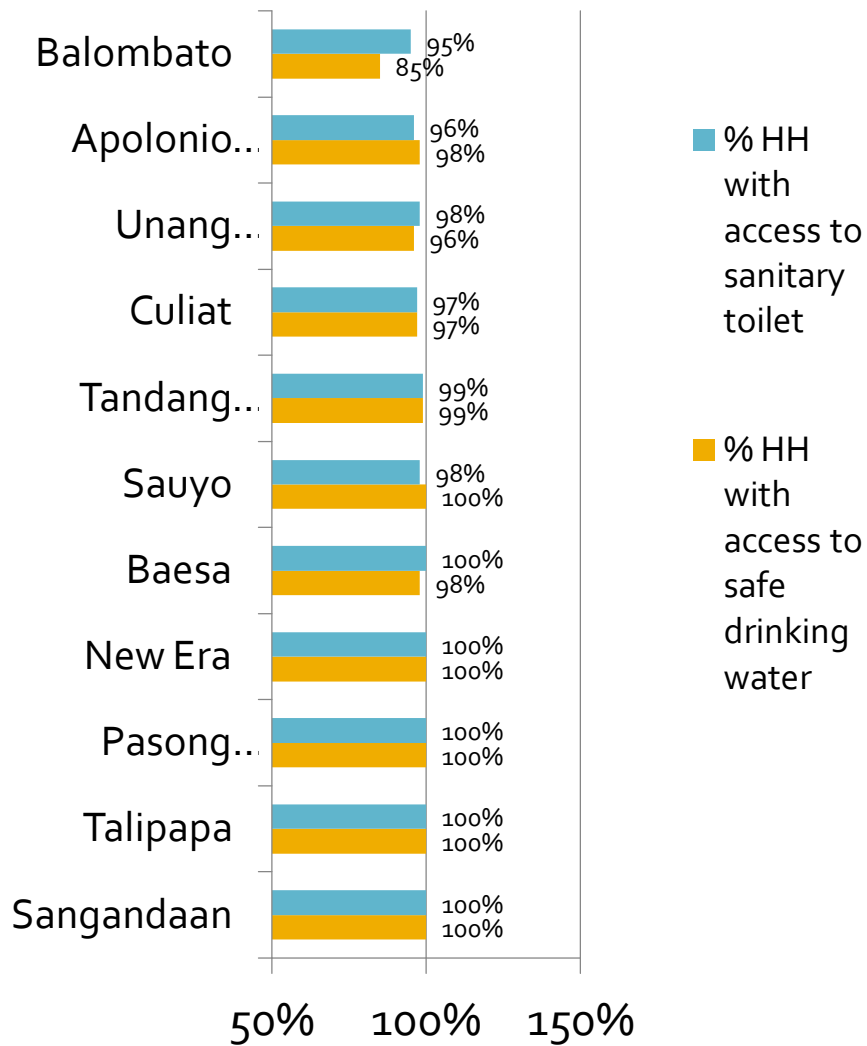


### Current location of ISFs



# Social development

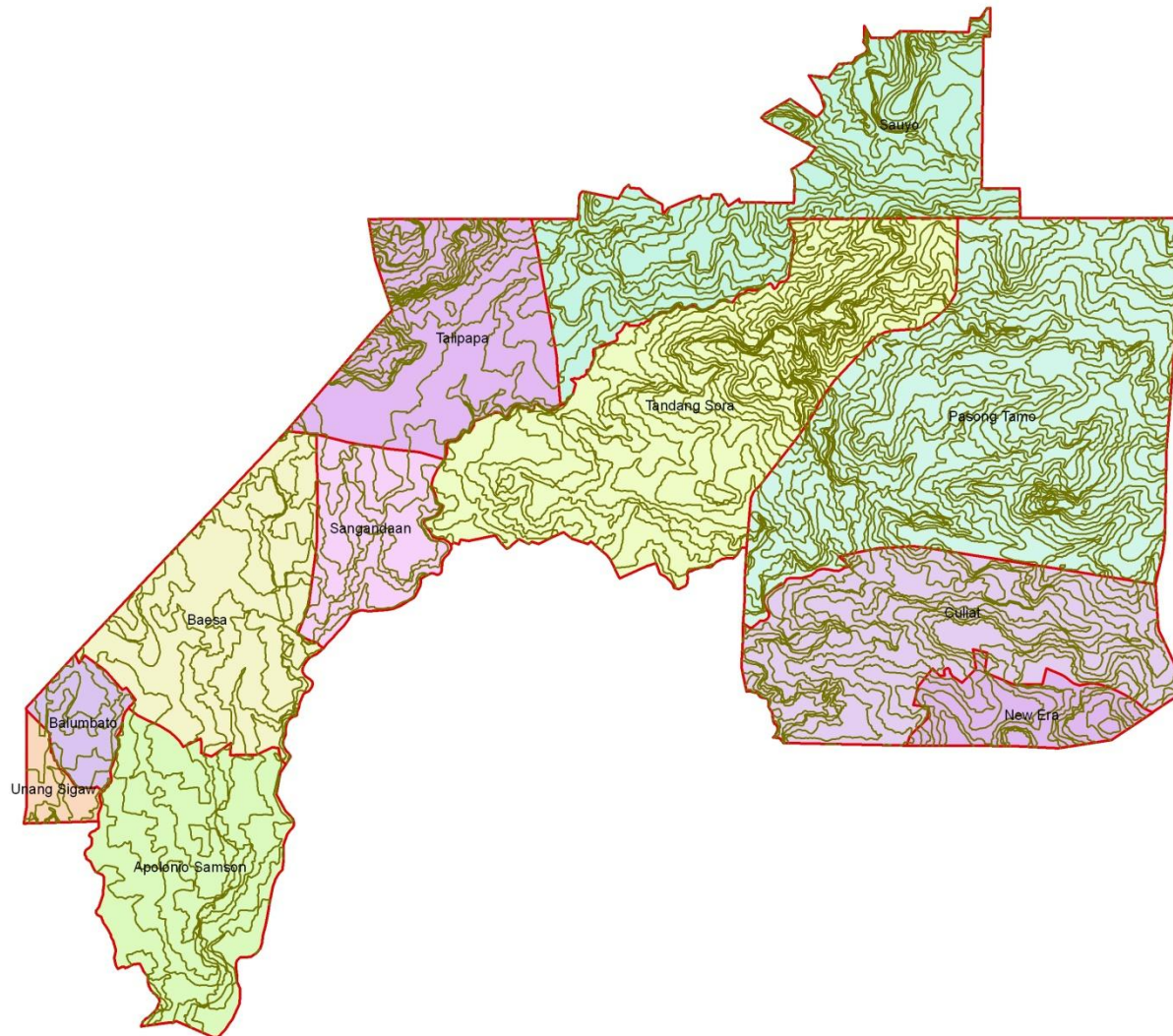
## HOUSING



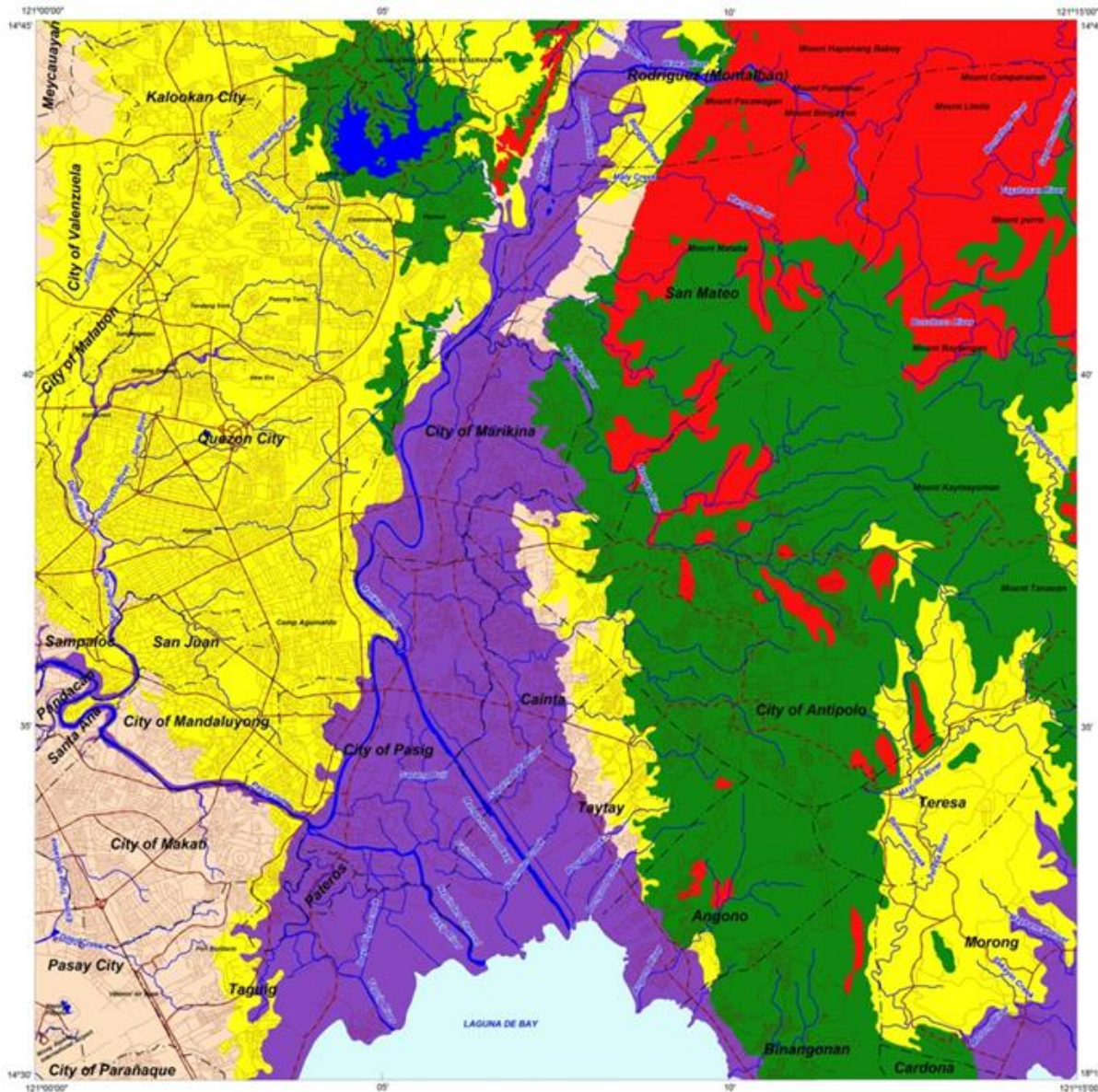
	Access to adequate sewerage system
Balombato	Non-served
Apolonio Samson	Non-served
Unang Sigaw	Non-served
Culiat	Non-served
Tandang Sora	Non-served
Sauyo	Non-served
Baesa	Partly served (MWSI)
New Era	Non-served
Pasong Tamo	Non-served
Talipapa	Non-served
Sangandaan	Partly served (MWSI)

# Environmental management

## Topographic map



# LANDSLIDE AND FLOOD SUSCEPTIBILITY MAP OF QUEZON CITY QUADRANGLE QUEZON CITY, PHILIPPINES



**LEGEND :**

- **High susceptibility to landslide**  
Areas with high landslide susceptibility rating have active/latent landslides and tension cracks that would directly affect the community. Those with steep slopes and drainages that are prone to landslide damming are also highly susceptible to landslides.
- **Moderate susceptibility to landslide**  
Areas with moderate landslide susceptibility rating have inactive/latent landslides and tension cracks which are located away from the community. These areas usually have moderate slopes.
- **Low susceptibility to landslide**  
Areas with low to gentle slopes and lacking tension cracks have low landslide susceptibility rating.
- **High susceptibility to flooding**  
Areas with greater than 1 meter flood height. These areas are usually flooded for several hours during heavy rains, include bedforms of topographic lows such as active river channels, abandoned river channels and areas along river banks, also prone to flashfloods.
- **Low to moderate susceptibility to flooding**  
Areas with less than 1.0 meter flood height. These are usually inundated during prolonged and extensive heavy rainfall or extreme weather condition.

- Main road
- Secondary road
- Trail road
- River
- Municipal boundary

0 1.5 3  
kilometers

TRANSVERSE MERCATOR PROJECTION  
MAPPING SCALE: 1:50,000

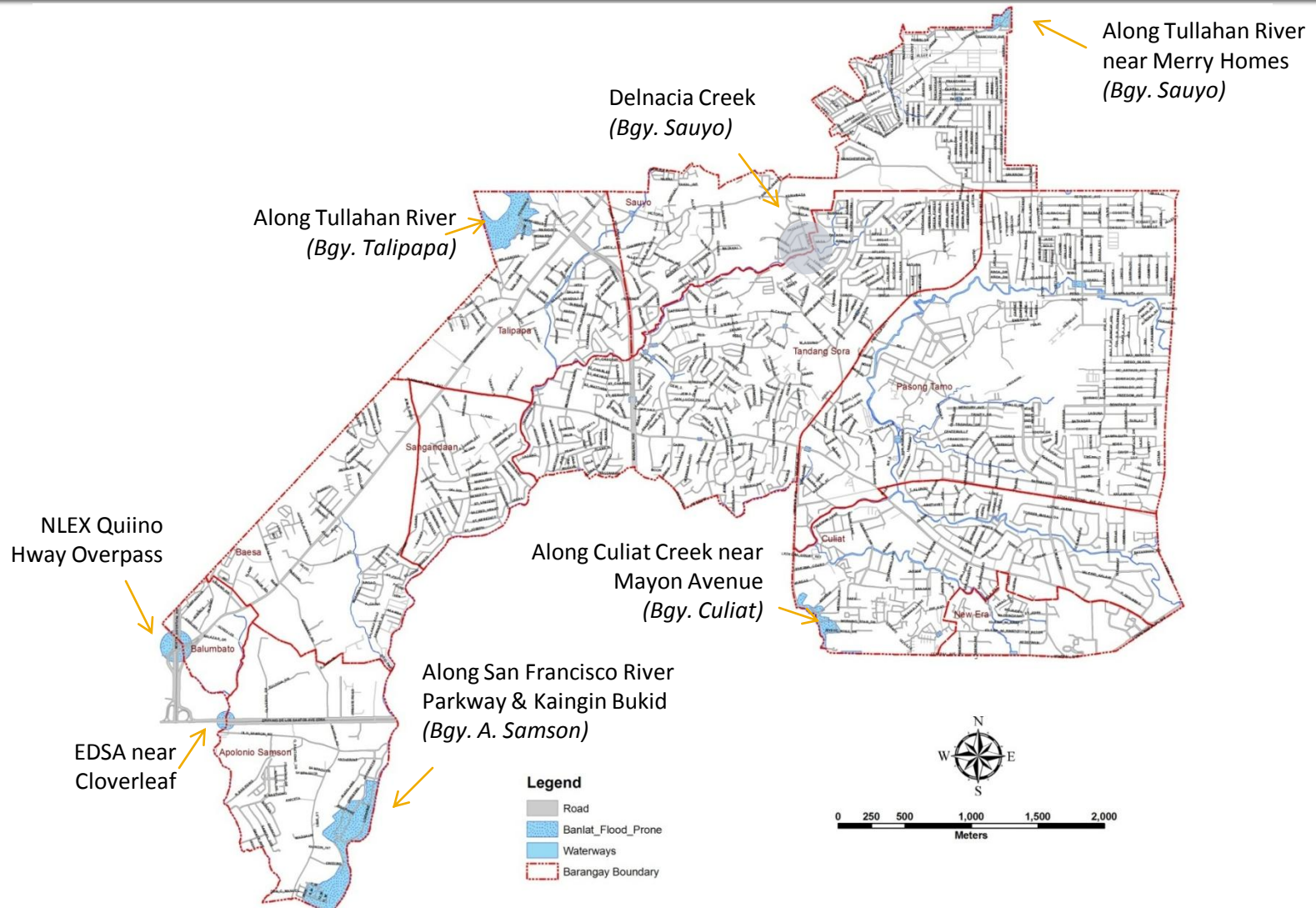
**GIS Processing :**  
Lands Geological Survey Division

**Data Source:**  
MGB Geohazard Assessment Team  
Geological Database and Information Systems Section  
Lands Geological Survey Division  
Geosciences Division MGB C/O

**Base Map :**  
Sheet No. 3220 II "Quezon City Quadrangle"

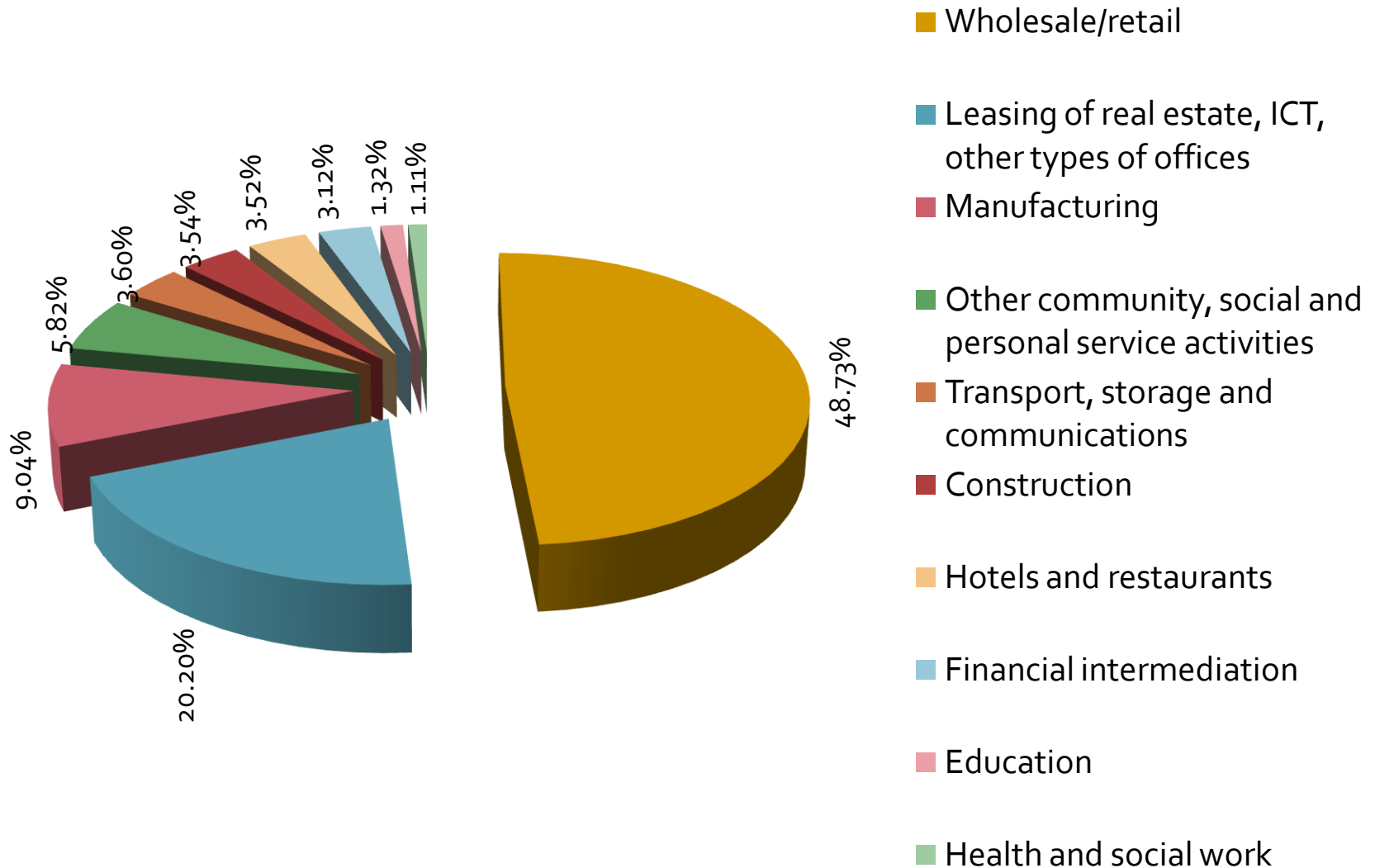
# Environmental management

## Flood-prone areas



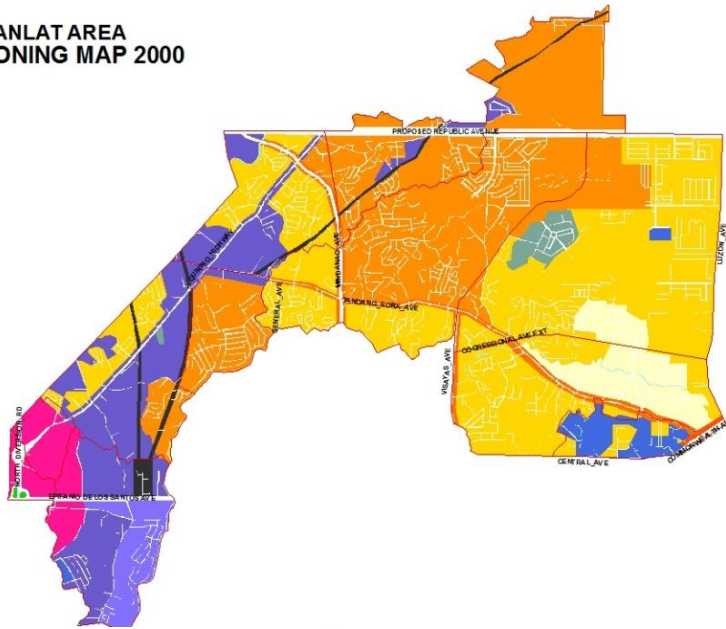
# Economic development

## Economic activities



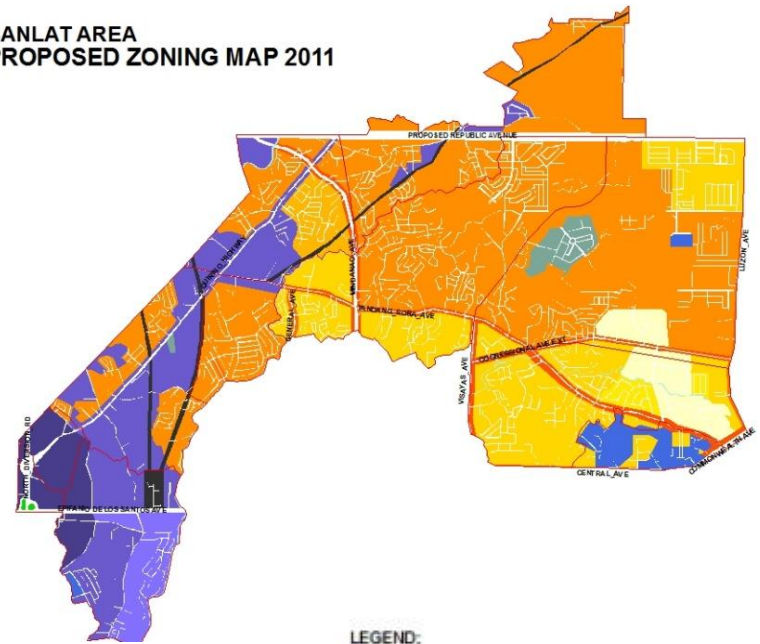
# Land use and infrastructure Zoning

BANLAT AREA ZONING MAP 2000



- LEGEND:**
- R1 LOW DENSITY RESIDENTIAL ZONE
  - R2 MEDIUM DENSITY RESIDENTIAL ZONE
  - R3 HIGH DENSITY RESIDENTIAL ZONE
  - C1 MINOR COMMERCIAL ZONE
  - C2 MAJOR COMMERCIAL ZONE
  - C3 METROPOLITAN COMMERCIAL ZONE
  - I1 LIGHT INTENSITY INDUSTRIAL ZONE
  - I2 MEDIUM INTENSITY INDUSTRIAL ZONE
  - INSTITUTIONAL ZONE
  - SPECIAL URBAN DEVELOPMENT ZONE
  - SOCIALIZED HOUSING
  - PARKS
  - UTILITY
  - CEMETERY
  - ROAD
  - WATER

BANLAT AREA PROPOSED ZONING MAP 2011

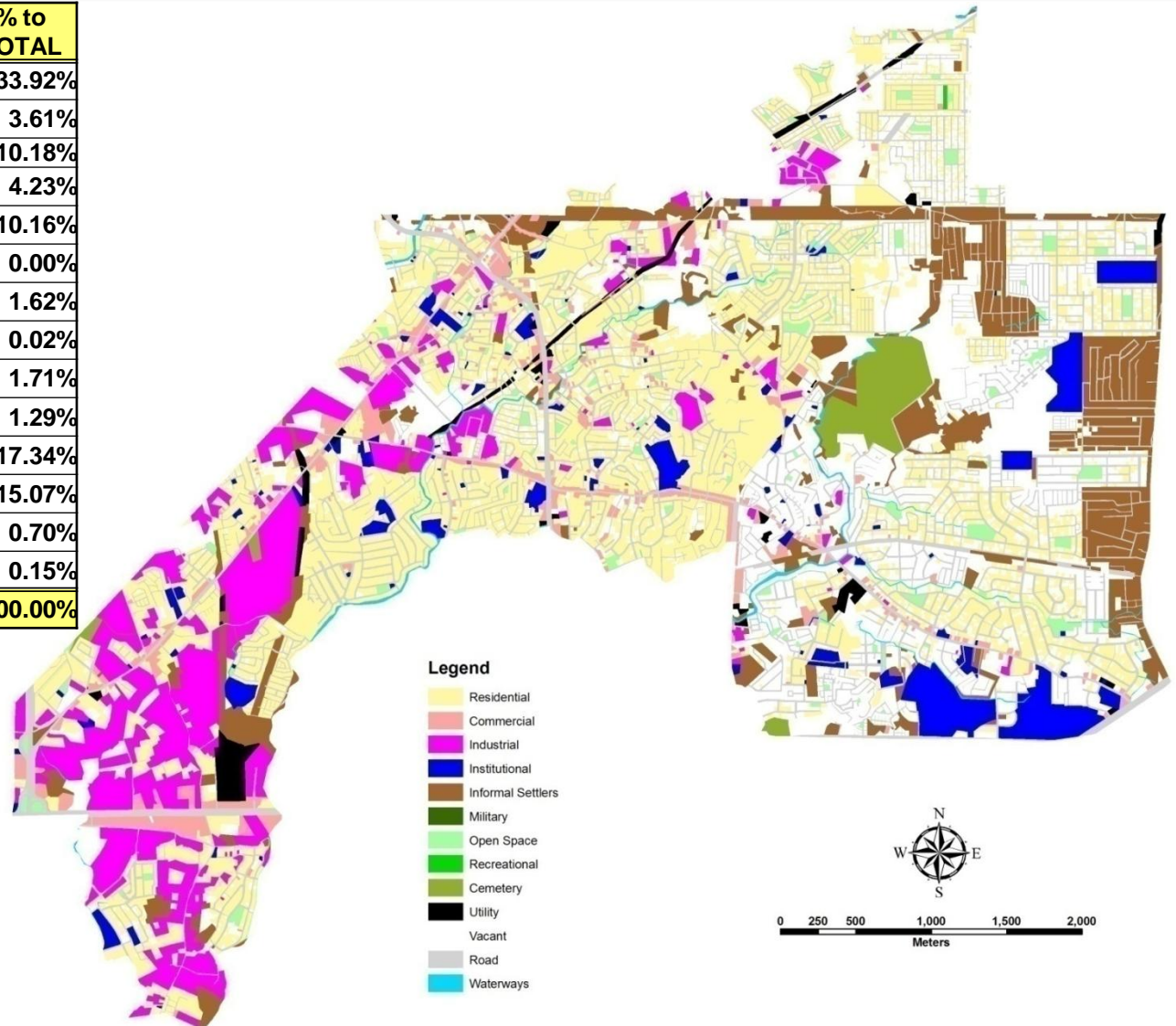


- LEGEND:**
- R1 LOW DENSITY RESIDENTIAL ZONE
  - R1-A LOW DENSITY RESIDENTIAL SUB ZONE
  - R2 MEDIUM DENSITY RESIDENTIAL ZONE
  - R2-A MEDIUM DENSITY RESIDENTIAL SUB ZONE
  - R3 HIGH DENSITY RESIDENTIAL ZONE
  - C1 MINOR COMMERCIAL ZONE
  - C2 MAJOR COMMERCIAL ZONE
  - C3 METROPOLITAN COMMERCIAL ZONE
  - I1 LIGHT INTENSITY INDUSTRIAL ZONE
  - I2 MEDIUM INTENSITY INDUSTRIAL ZONE
  - AGRO-INDUSTRIAL ZONE
  - INSTITUTIONAL ZONE
  - SPECIAL URBAN DEVELOPMENT ZONE
  - SPECIAL DEVELOPMENT AREA
  - SOCIALIZED HOUSING
  - PARKS
  - UTILITY
  - CEMETERY
  - ROAD
  - WATER

# Land use and infrastructure

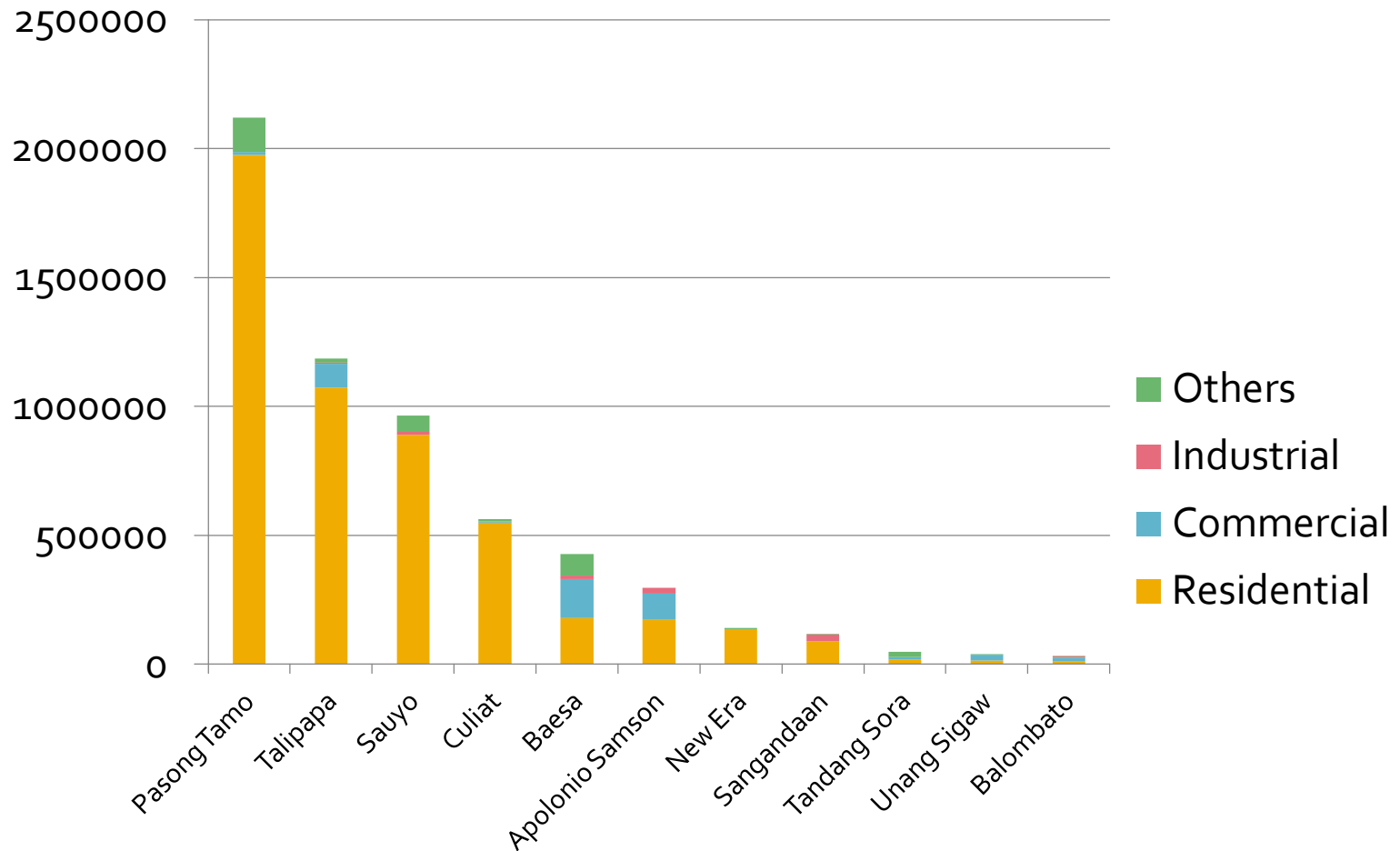
## 2009 actual land use

LAND USE	AREA		% to TOTAL
	(in sq. m.)	(in has)	
Resd'l	7,407,073.25	740.71	33.92%
Comm'l	787,627.35	78.76	3.61%
Ind'l	2,222,201.30	222.22	10.18%
Inst'l	923,361.57	92.34	4.23%
IS	2,218,269.39	221.83	10.16%
Mil	-	-	0.00%
O.S.	353,057.67	35.31	1.62%
Recr'l	4,406.62	0.44	0.02%
Cem	374,396.73	37.44	1.71%
Util	282,757.02	28.28	1.29%
Vacant	3,786,487.48	378.65	17.34%
Road	3,291,325.46	329.13	15.07%
Waterways	152,550.27	15.26	0.70%
To be verified	32,168.89	3.22	0.15%
<b>TOTAL</b>	<b>21,835,683.02</b>	<b>2,183.57</b>	<b>100.00%</b>



# Land use and infrastructure

## Idle land 300 sqm up



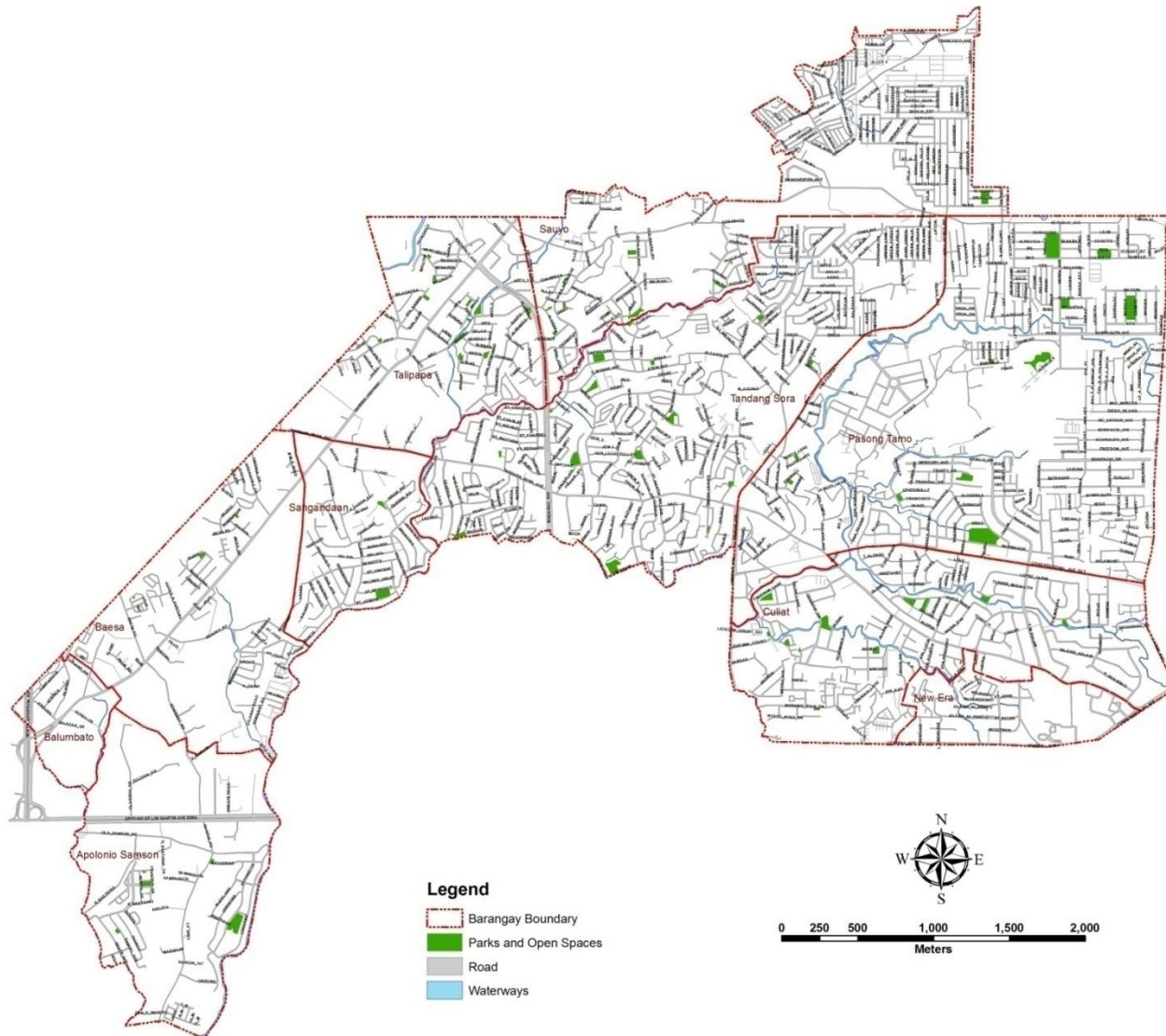
# Land use and infrastructure

## Idle land 300 sqm up

	Residential	Commercial	Industrial	Others	Total
Pasong Tamo	1,976,459	11,301		132,284	2,120,044
Talipapa	1,073,135	91,820	6,009	13,848	1,184,813
Sauyo	889,466		12,136	62,192	963,794
Culiat	548,643	5,619		8,455	562,717
Baesa	179,970	150,414	14,586	82,060	427,031
Apolonio Samson	173,271	101,746	22,542		297,560
New Era	135,865			3,915	139,780
Sangandaan	88,750		26,510	3,156	118,416
Tandang Sora	19,915	8,371		19,499	47,785
Unang Sigaw	13,364	23,188		562	37,114
Balombato	13,253	13,483	2,544	491	29,771
	5,112,092	405,941	84,327	326,463	5,928,824

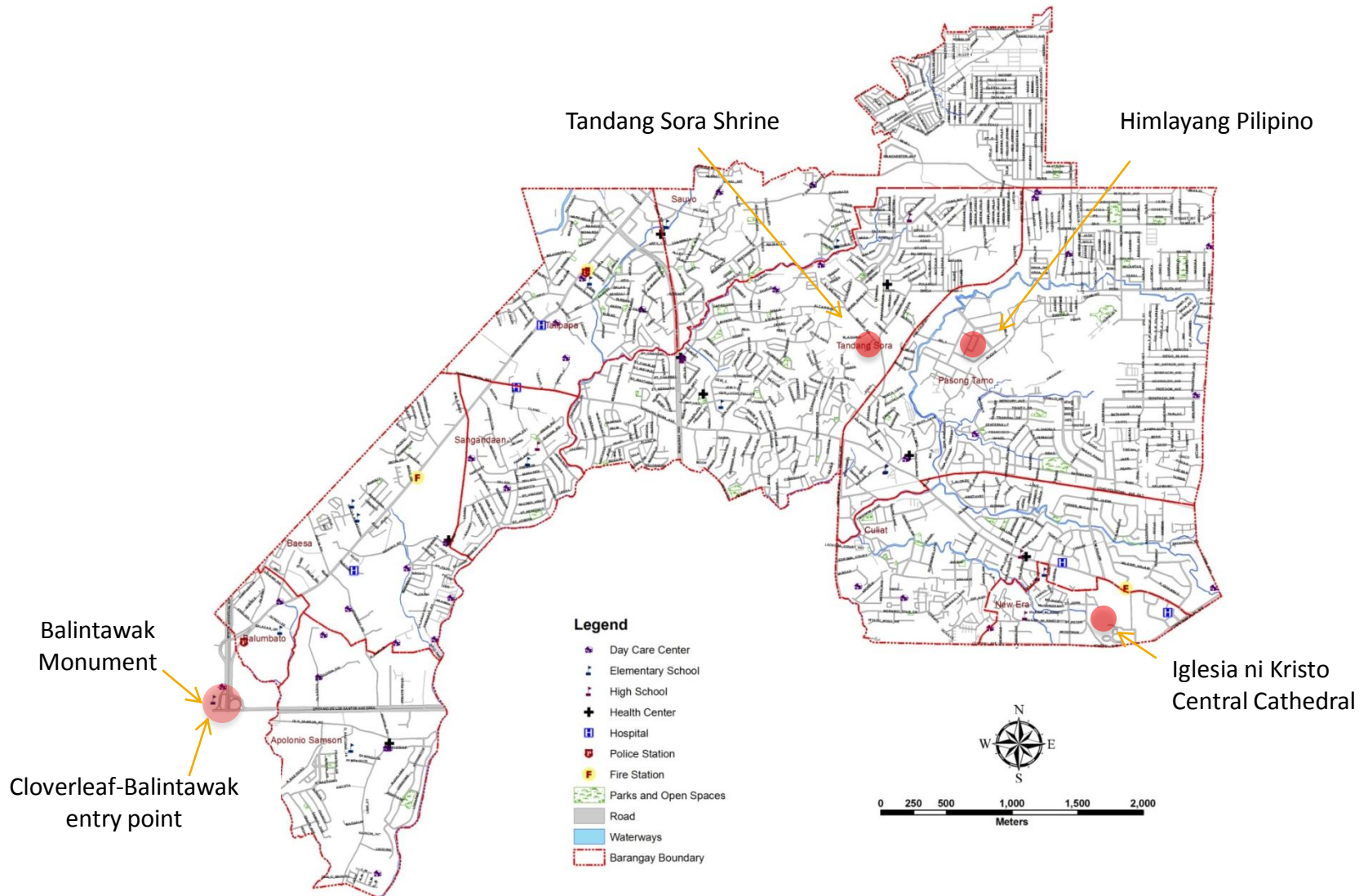
# Land use and infrastructure

## Parks and open spaces



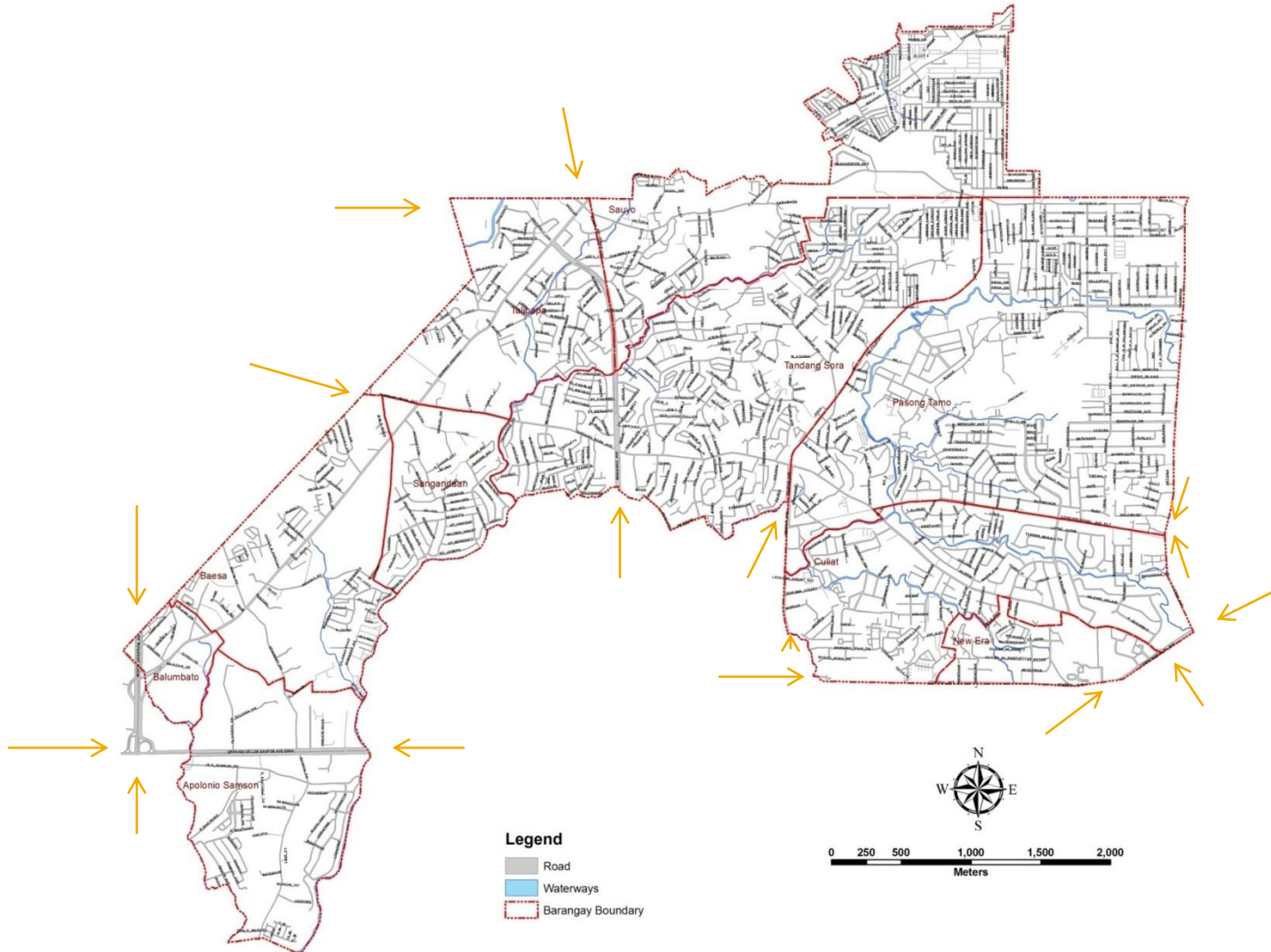
# Land use and infrastructure

## Landmarks and historical areas



# Land use and infrastructure

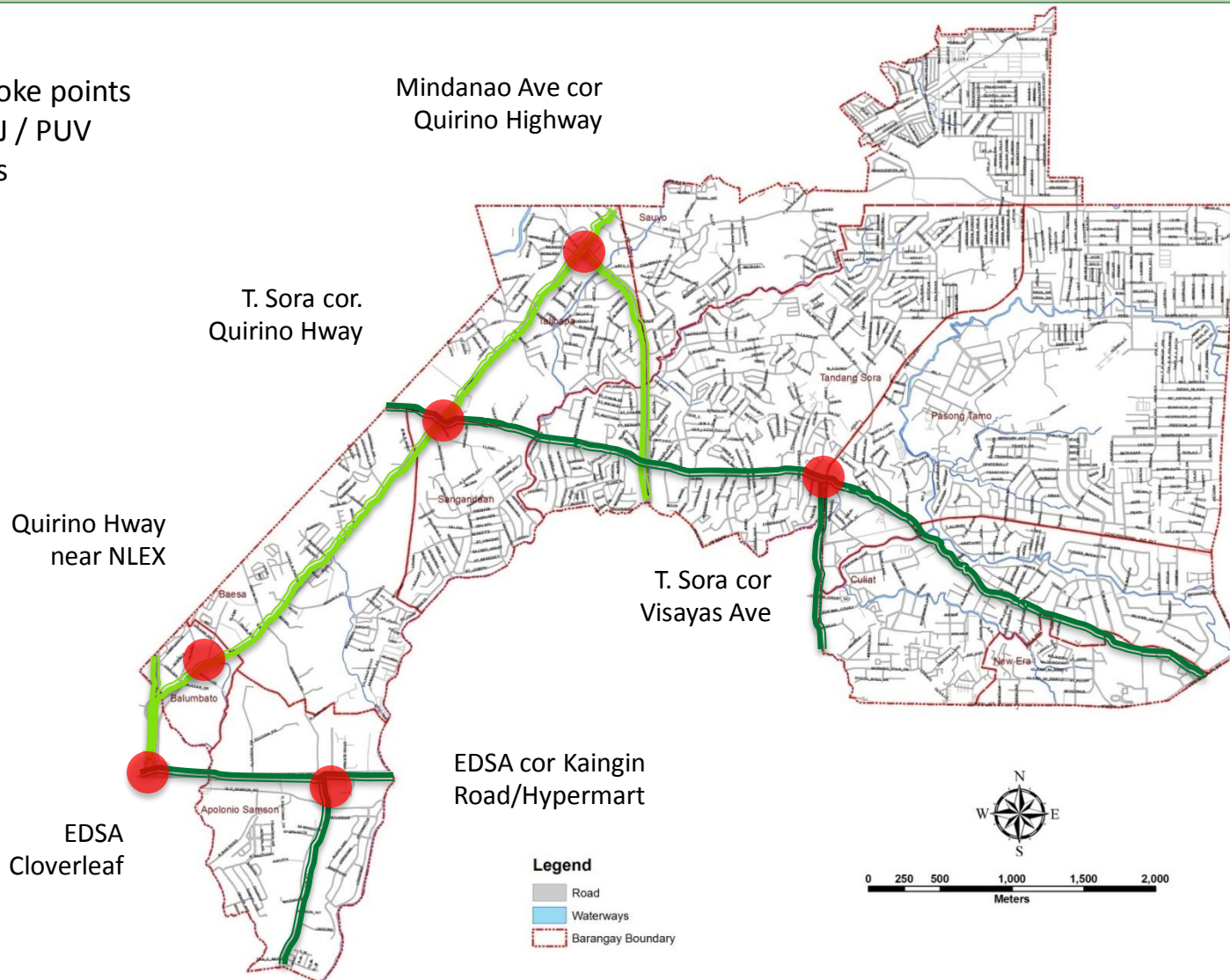
## Access



# Land use and infrastructure

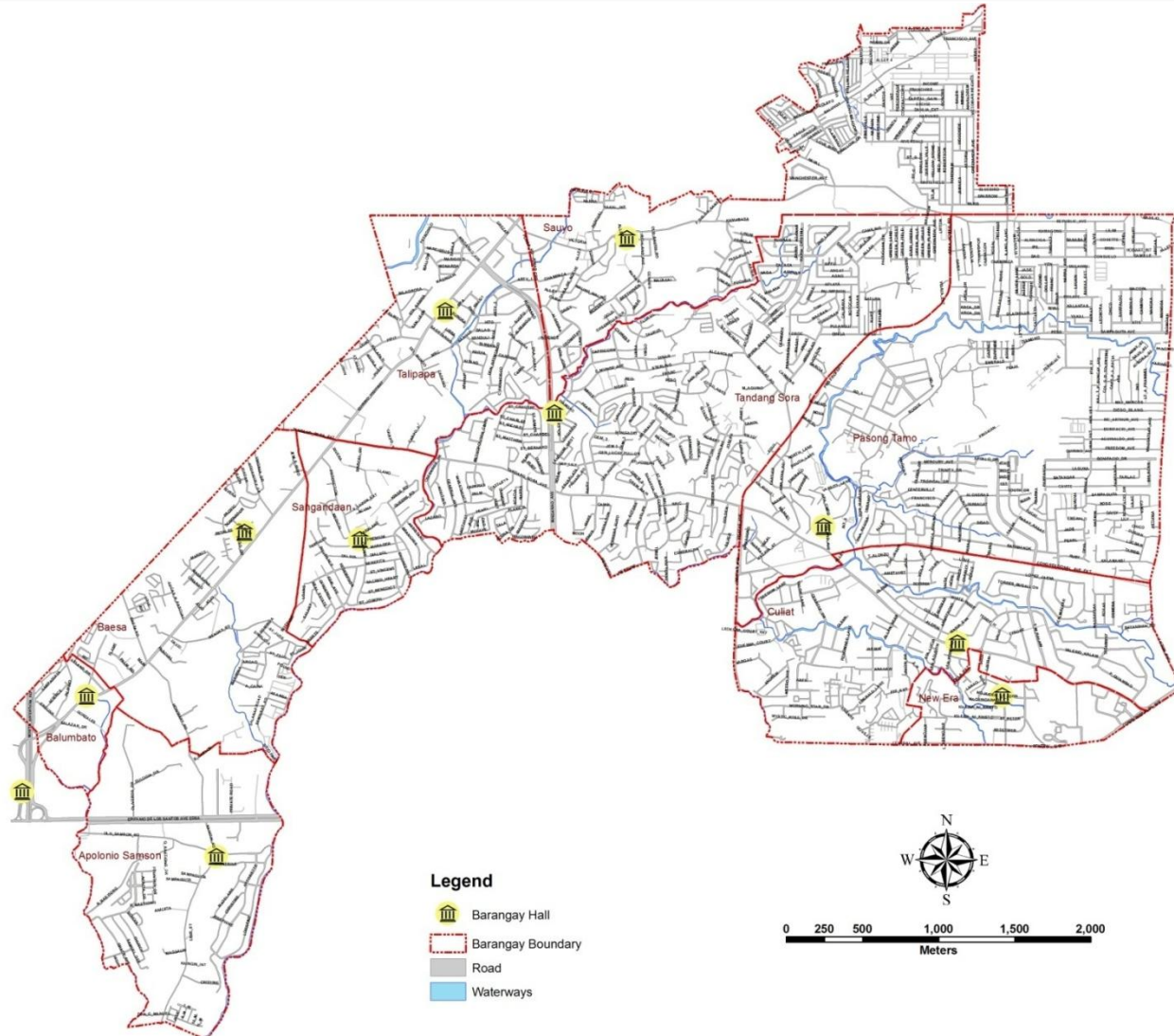
## Traffic-prone areas

- Choke points
- PUJ / PUV
- Bus



# Institutional development

## Barangay halls



# Institutional development

## NGO/PO

Apolonio Samson	1 accredited org – HOA
Baesa	11 orgs – 4 HOA; 3 women; 1 professionals; 1 senior citizens, 1 urban poor, 1 youth
Balombato	1 org – senior citizens
Culiat	9 orgs – 4 HOA, 2 urban poor, 1 PWD, 1 academe, 1 charitable
New Era	
Pasong Tamo	9 orgs – 5 HOA, 2 senior citizens, 1 urban poor, 1 social justice
Sangandaan	1 org – senior citizens
Sauyo	9 accredited orgs – 8 urban poor, 1 youth/children/sports
Talipapa	3 accredited orgs – 1 business, 1 HOA, 1 youth
Tandang Sora	1 org – urban poor
Unang Sigaw	1 org – urban poor

# Significant problems

## Social

- **Health**

- Lack of available sites for establishment of new health center
- Lack of health personnel (doctors, nurses, midwives)
- Uncompensated salary based on the health center personnel's profession
- Inadequate health center supplies and equipments
- Lack of communication equipment (telephone and computers)
- Congested public cemeteries

- **Education**

- Classrooms shortage for 5 elementary schools and 2 high schools
- Need for additional teachers
- School expansion sites for Sauyo ES and HS

- **Welfare**

- Bgy. New Era is one of the 29 barangays in the city with no day care center
- Most of existing DCCs are shared with bgy. halls, multi-purpose halls and SK halls. Others located in dead end road, road lots, sidewalk and in privately owned lots
- Classroom – pre-school children ratio is 1:40 way below the standard of 1:25
- No record/data for DCCs operated by Non-Government Organizations (NGOs)

- **Protective**

- Unavailability of lots for police station and fire sub-station sites

# Significant problems

## Economic

- **Decrease of economic activities.** Some of the old industrial establishments in the area are now abandoned or being used as storage facilities / warehouses. Such operation lessens productivity and economic activities and contributes to the deterioration of the area.
- **Uncontrolled proliferation of illegal vendors** particularly at the Cloverleaf Market zone has caused adverse effects on the physical & environmental condition in the area.
- **Deteriorating conditions of the existing markets.**